



# WHEATLAND COUNTY

Where There's Room to Grow

## Request for Decision

February 18<sup>th</sup>, 2020

Resolution No. \_\_\_\_\_

Date Prepared February 5<sup>th</sup>, 2020

### Subject

Stop sign request – RR 245 & Twp. Rd. 244

### Recommendation

Clear resolution answering – what/who/how/when

**That Wheatland County Council approve the installation of a stop sign controlling eastbound traffic at the intersection of Range Road 245 and Township Road 244.**

### CAO Comments

Any additional comments regarding the reason for the recommendation

### RECOMMENDATION

Report/Document:

Attached



Available



None



### Key Issue(s) / Concepts Defined

Define the topic, reference background material and state question to be answered

Wheatland County has received a request to install a stop sign at the intersection of Range Road 245 and Township Road 244. This intersection currently has traffic control devices consisting of a stop sign controlling the westbound traffic and a yield sign controlling the eastbound traffic.

The intersection has poor sightlines due to a large grove of trees on the North East corner of the intersection and has been subject to many near misses in the past.

The installation of a stop sign controlling the eastbound traffic will help mitigate some of these concerns.

### Relevant Policy / Practices / Legislation

Cite existing policies, practices and/or legislation

The past practice has been to bring all revisions to legislative sign, including speed limits and traffic control devices, to Council for approval.

## Strategic Relevance

Reference to goals or priorities of current work program

## Response Options and Desired Outcome(s)

Main result, along with highlighted requisites and benefits

1. **Approve recommendation.**
2. **Not approve recommendation.**
3. **Approve an alternate recommendation of Council's choice.**

## IMPLICATIONS OF RECOMMENDATION

### General

Consequences to community, overall organization and/or other agencies

### Organizational

Policy change or staff workload requirements

The replacement of the sign can be completed under regular operations.

### Financial

Current and/or future budget impact

The cost of installing a stop sign is approximately \$200.

### Environmental, Staff and Public Safety

Consequences for the environment, consideration of effects on the safety of staff and the public

The installation of a stop sign in this location will enhance safety at the intersection.

### Follow-up Action / Communications

Timelines, decision-making milestones and key products

n/a

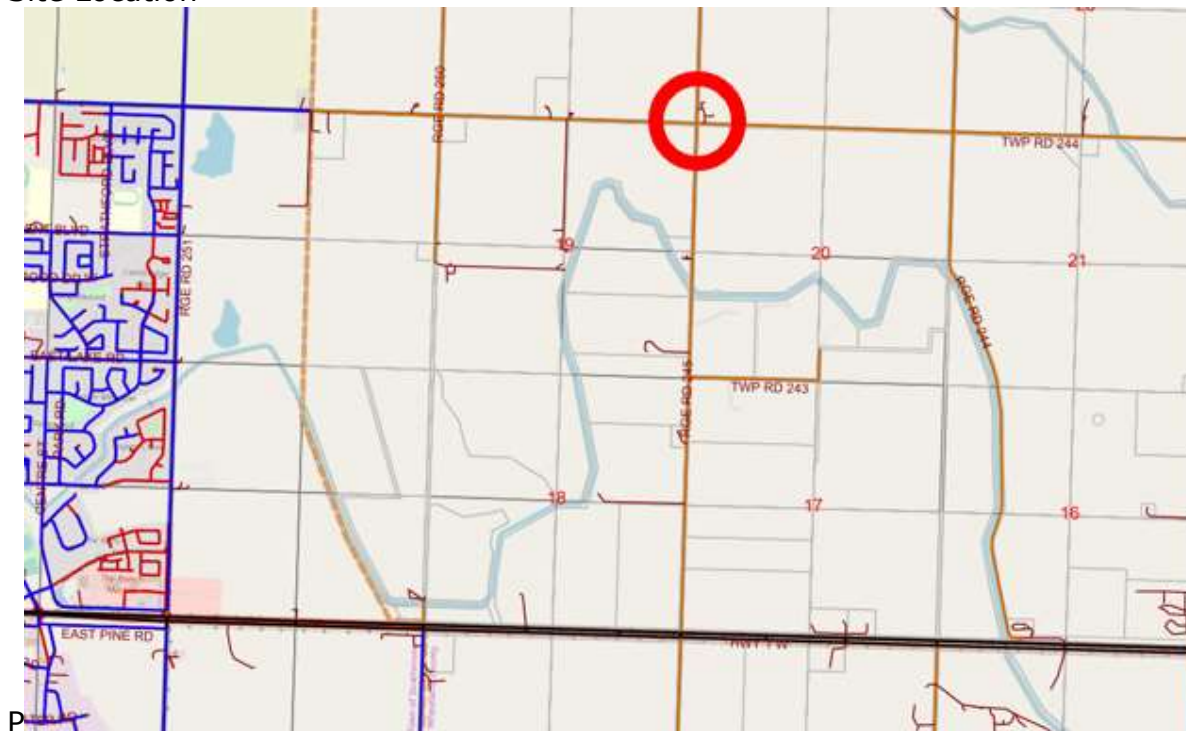
Submitted by: Mike Ziehr  
General Manager of Transportation &  
Agriculture



Reviewed by: Brian Henderson  
CAO



Site Location



Eastbound lane – Twp. Rd 244

