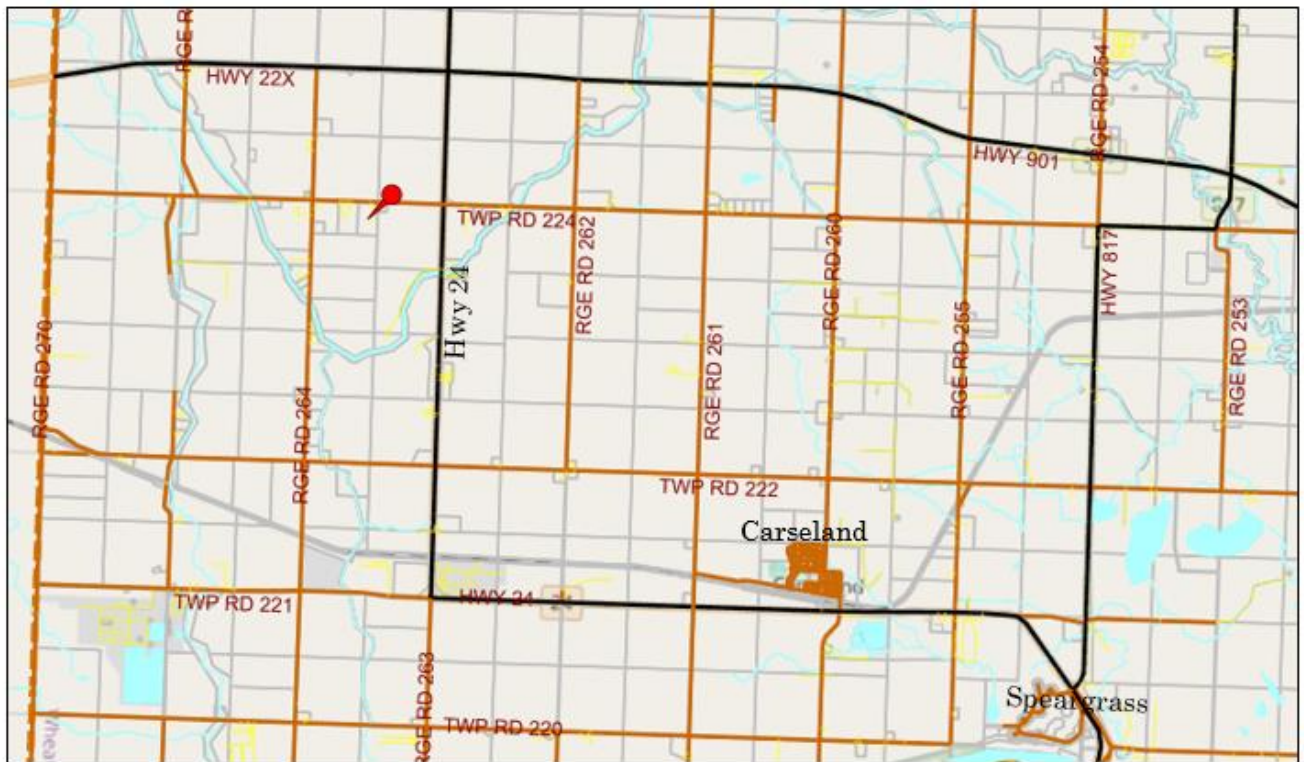
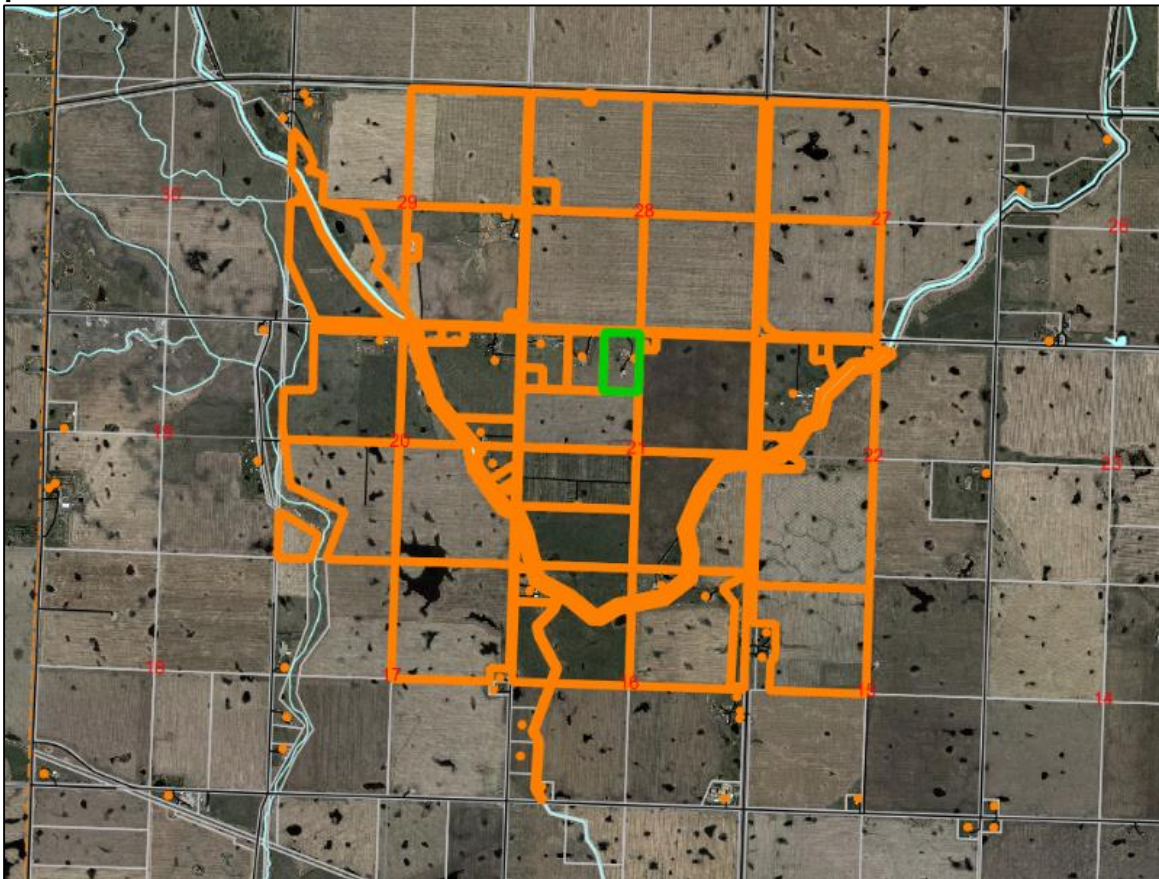


## Appendix A: Location Plan



## Appendix B: Circulation Area

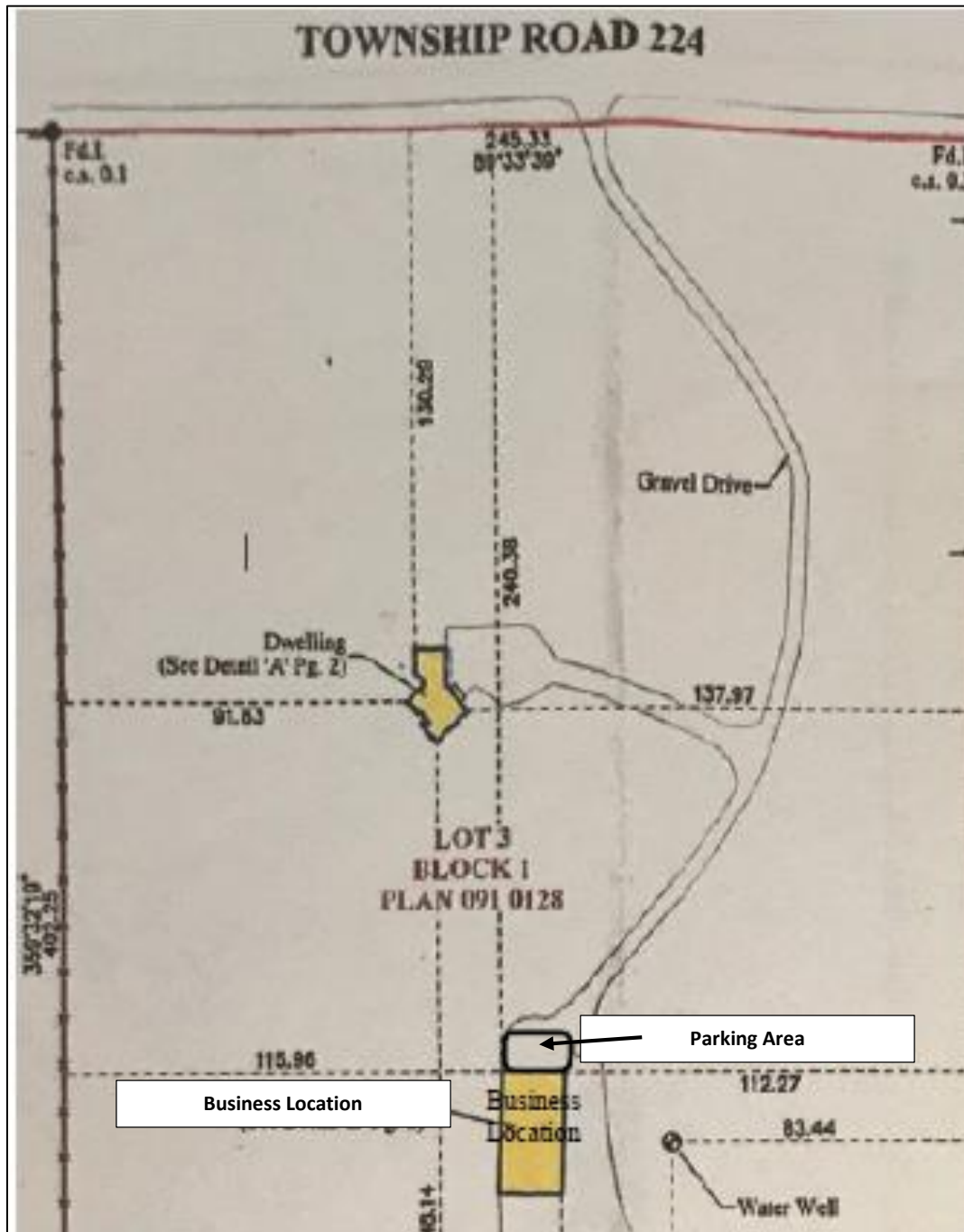


## Appendix C: Aerial Photos





## Appendix D: Site Plan



## Appendix E: Photos

### Proposed Signage for Existing Building



**Appendix F: Examples of Equipment Used**  
(from website of business in the current location):

## **NLX 3000 | 1250**



- The NLX 3000 | 1250 is a high-rigidity, high-precision CNC lathe with a distance between centers of 1,250 mm, handling various work pieces. The model is equipped with high turning capability supported by a robust bed, and superb milling performance with the matured BMT (Built-in-Motor Turret).
- The model demonstrates the outstanding performance in a variety of fields including the automotive industry seeking high productivity and the construction machinery industry requiring high rigidity.

## **NLX 2500/700 (x2)**



- Market leader in efficiency, longevity, and reliability in critical dimensions
- Highest accuracy due to thermosymmetrical structure
- Integrated drive motor for outstanding performance
- Integrated cooling system in the machine bed to control and improve thermal displacement
- Slideways on all axes

# Aircenter SM 10 Rotary Screw Compressor



## S20 III Band Saw



- Market leader in efficiency, longevity, and reliability in critical dimensions
- Highest accuracy due to thermosymmetrical structure
- Integrated drive motor for outstanding performance
- Integrated cooling system in the machine bed to control and improve thermal displacement
- Slideways on all axes